



P R O F E S S I O N A L

**LITHIUM ION
TRIMMER INSTRUCTIONS**

LITHIUM ION TRIMMER

Please read all instructions carefully to familiarise yourself with your new trimmer before using.

Save these instructions for further reference.

For any further assistance or information call Customer Services on

T: 01227 740066

or visit

W: www.wahl.co.uk

E: customer.services@wahl.co.uk

CONTENTS

GENERAL USER INFORMATION	Page 3
IMPORTANT SAFEGUARDS	Page 5
OPERATING INSTRUCTIONS	Page 8
TROUBLESHOOTING	Page 9
CLEANING & MAINTENANCE	Page 9
WIRING	Page 10
DISPOSAL	Page 10
PRODUCT REGISTRATION	Page 11
GUARANTEE	Page 11

GENERAL USER INFORMATION

Information about using the operation manual

- ▶ Before using the appliance for the first time, you must read and understand the operation manual completely.
- ▶ Consider the operation manual as part of the product and store it in a safe and accessible place.
- ▶ Include this operation manual if passing the appliance on to a third party.
- ▶ In the case of conflicts with national safety specifications or instructions, the national requirements must be followed.

Explanation of symbols and notes



DANGER

Danger of electric shock which may result in serious physical injury or death.



DANGER

Danger of explosion which may result in serious physical injury or death.



WARNING

Warning of possible physical injury or a health risk.



CAUTION

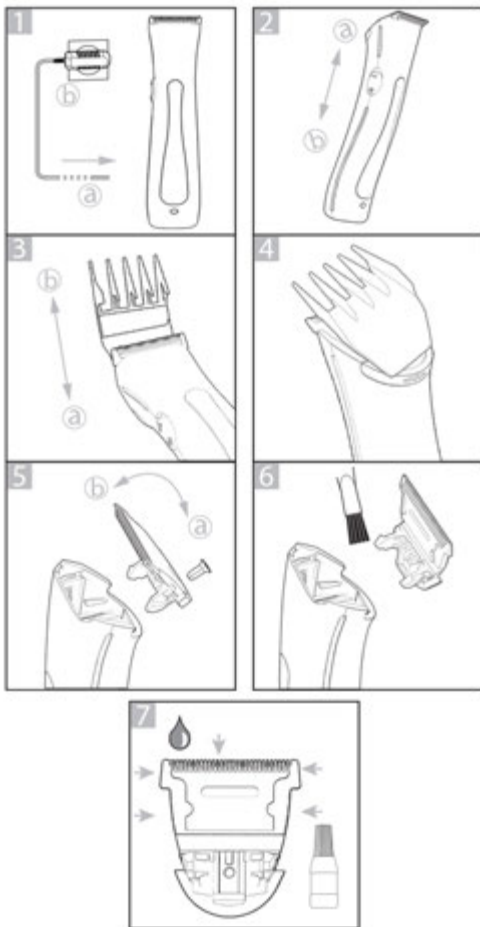
Information about danger of material damage.



Note with useful information and tips.

- ▶ Action to be taken by owner.
1. Carry out these actions in the sequence described.
- List

LITHIUM ION TRIMMER



Please retain this leaflet for future reference.

READ ALL INSTRUCTIONS BEFORE USING.

IMPORTANT SAFEGUARDS

When using this electrical appliance, especially when children are present, basic safety precautions should always be observed including the following.

Requirements

- ▶ Read the instruction manual in full to familiarize yourself with the product before the first use.
- ▶ This appliance can be used by children from aged 14 years and above and persons with reduced physical, sensory or mental capabilities, or lack of experience and knowledge, if they have been given supervision or instruction concerning use of the appliance in a safe way and understand the hazards involved. Children shall not play with the appliance. Cleaning and user maintenance shall not be made by children without supervision.
- ▶ Use this appliance only for its intended purpose.

Hazards



Danger! Electric shock due to damage to appliance

- ▶ Do not operate the appliance with a broken cord, plug or charger, or if the appliance malfunctions, or is dropped or damaged in anyway.
- ▶ Any servicing or repair must be performed by an authorized service representative.
- ▶ The use of attachments that are not supplied by the manufacturer may cause fire, electric shock or injury and damage to the appliance.



Danger! Electric shock due to penetration of liquid.

- ▶ To protect against risk of electrical shock, never immerse the unit or let it come into contact with water or any other liquids. Do not use the unit with wet hands. If the appliance should become wet, damp or fall in water, remove plug from mains socket immediately. Do not put your hands in the water. Do not take into bathroom.



Danger of explosion

- ▶ Never use the appliance where aerosol (spray) products are being used or where oxygen is released.

- ▶ Exhausted batteries/ rechargeable batteries should not be disposed of in the household waste. Dispose of them in a completely discharged state in accordance with local legal regulations. Do not throw into fire where heat could cause them to rupture.

**Warning! Injuries due to incorrect handling**

- ▶ Switch off the appliance and unplug from outlet when not in use, before putting on or taking off attachments and also before cleaning the appliance.
- ▶ Never use your appliance without paying attention! Except when charging always unplug this appliance from the electricity outlet immediately after using.

**Caution! Danger of product damage**

- ▶ Do not wrap the cord around the appliance / charger.
- ▶ Do not use outdoors or in damp areas.
- ▶ Never carry the unit by its power cord.
- ▶ Do not drop or insert any object into any opening.

LITHIUM ION TRIMMER

OPERATING INSTRUCTIONS

Before the appliance is used for the first time it should be charged for 1 hour.

CHARGING THE RECHARGEABLE BATTERY

Connect the plug-in transformer to the power supply (fig1). Ensure the appliance is switched off, otherwise it cannot be charged (fig2b).

Place the appliance on the charging stand. Whilst charging the charging indicator will illuminate.

The charger indicator will go out when removed from the charging stand.

We recommend you only charge your appliance when its performance has deteriorated noticeably.

Longer charging times do not damage the appliance.

It takes approximately 1 hour for the appliance to be fully charged. This will allow 75 minutes run time.

Use only the charging transformer supplied with this kit.

DO NOT attempt to charge with any other transformer.

FOR CORDED OPERATION

Disconnect the power cord from the back of the stand and connect to the receptacle in the bottom of the unit. If your battery is completely run down, allow the unit to charge for 1 Minute (switched off) before using as a corded unit.

If the cord is left attached to the unit when not in use, the cord will automatically charge the unit when left in the OFF position.

CHANGING THE BLADE SET

The blade set can be removed by pushing the blade set away from the housing in the direction of the arrow see (fig 5a).

To replace blade set position it with the hook in the slot on the housing and press until it clicks into place (fig 5b).

TROUBLESHOOTING

If your trimmer does not seem to be operating or charging properly, please check the following:

1. Check outlet to make sure it is working properly by plugging in another appliance.
2. Be sure the trimmer is properly connected to the recharging receptacle, all connections are secure and the switch on the trimmers is turned OFF.
3. If your electricity is connected to a master power switch, we suggest the trimmer be disconnected from the charger anytime the master switch is off. Leaving the unit plugged into dead outlet or an unplugged charger will drain the battery.
4. If the trimmer does not run and it is completely charged, turn the unit ON and pinch or push the blades manually. Oil may have dried out between the blades, so they may be temporarily stuck together.
5. Your trimmer contains a rechargeable battery if and when a replacement is required contact Wahl Customer Service or an authorised service centre for advice on replacement.

CLEANING AND MAINTENANCE

Never immerse the appliance in water.

Remove the attachment comb after each use and clean the blade set using the cleaning brush.

Remove the blade set (fig 5) and clean the blade, by using your cleaning brush (fig 6).

The charging contacts of the appliance must be kept clean. Use only a slightly damp cloth for cleaning the housing and charging stand never use solvents or scouring agents.

Oil the blade set regularly using the oil supplied (fig 7) to maintain the cutting performance and ensure a long service life. Replace the attachment comb to protect the blade when not in use.

The blade set should be replaced if cutting performance is reduced after extended use.

LITHIUM ION TRIMMER

WIRING



WARNING: If the transformer is damaged it must be replaced.

This product must only be used with the transformer supplied. Should a replacement be required contact Wahl Customer Services.

DISPOSAL



Handle with care! Environmental damage in the case of incorrect disposal.

Correct disposal will ensure environmental protection and prevent any potentially harmful impacts on people and the environment.

Adhere to the relevant legal requirements when disposing of the appliance.

Information on the disposal of electrical and electronic appliances in the European Community:



Within the European Community, national regulations are specified for the disposal of electrical appliances, based on EU Waste Electrical and Electronic Equipment Directive 2002/96/EC (WEEE). In accordance with this, the appliance can no longer be disposed of with the local or domestic waste.

The appliance will be accepted free of charge by local collection points or recycling centres.

PRODUCT REGISTRATION

Wahl are constantly developing and launching new products in the UK. We would like to understand your product needs and expectations and we value any comments you may have. As part of Wahl Customer Services, we are offering you the chance to be kept up to date with the latest product launches, innovations and special offers.

Please take a minute to register your product online at www.wahl.co.uk.

GUARANTEE

This product is guaranteed against defects in material and workmanship for a period of 1 year from the date of original purchase or receipt as a gift.

Should this product become defective during the guarantee period, return it to the store of purchase together with your proof of purchase for repair or replacement.

Alternatively within the guarantee period you can return the product to Wahl (UK) Ltd who will repair any such defect or elect to replace the product or any part of it, without charge, provided that there is proof of purchase. Should a replacement be offered this will not extend the original guarantee period.

The guarantee becomes invalid in the case of misuse, alteration or repair by unauthorised persons.

This guarantee does not include blades, cables, shaver heads, foils and cutters etc which are consumable parts.

This guarantee in no way affects your rights under statutory law in the United Kingdom.

WAHL (UK) LIMITED
HERNE BAY TRADE PARK
SEA STREET
HERNE BAY
KENT
CT6 8JZ.

CUSTOMER SERVICES **T:** 01227 740066
www.wahl.co.uk

Form No. ZB031 Rev2 08-14