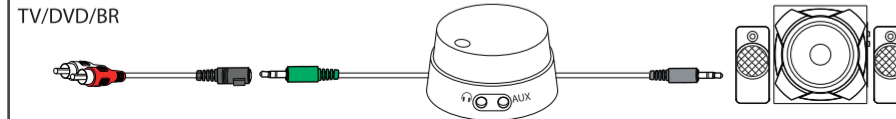
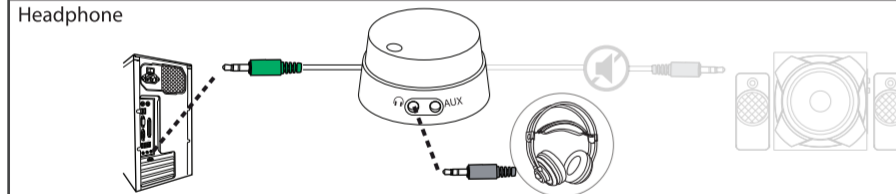
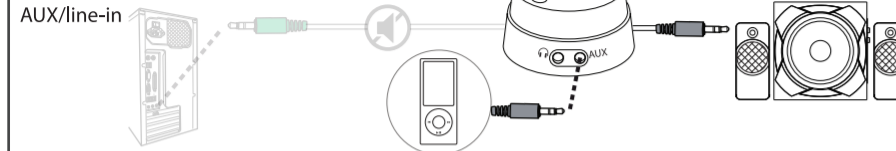
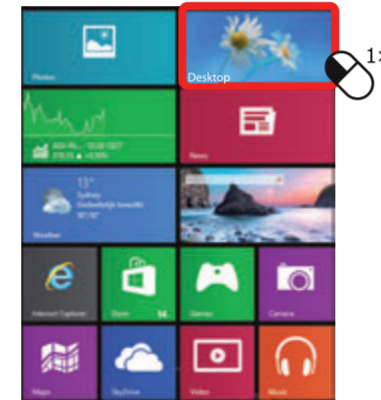


## 5. Other Connections

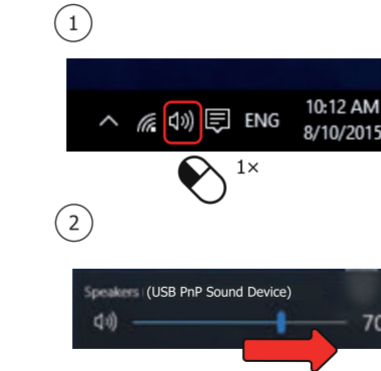


## 6. Installation - Windows 10/8/7

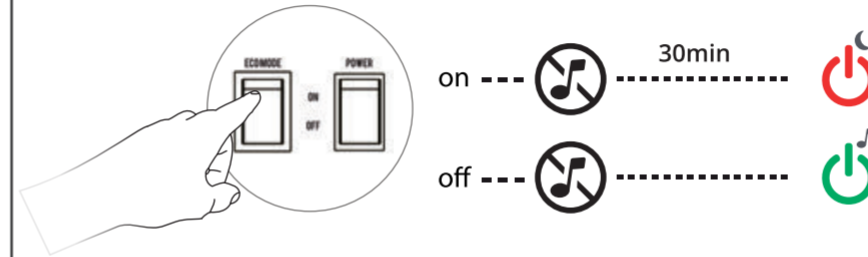
Windows 8  
Start here



Windows 10/7/Vista  
Start here



## 7. ECO Mode



## FAQ

Frequently Asked Questions [www.trust.com/20244/faq](http://www.trust.com/20244/faq)

© 2017 Trust International B.V. - All rights reserved - Laan van Barcelona 600 - 3317DD - Dordrecht - NL

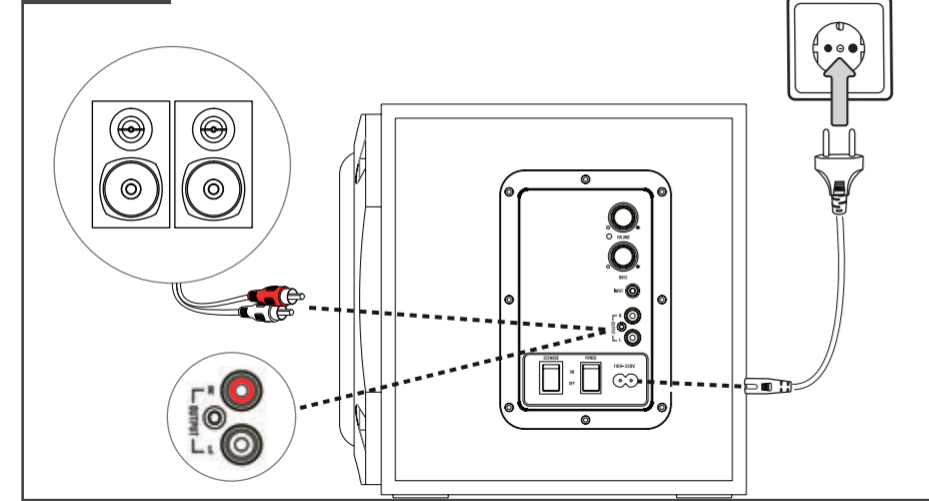
**Trust**

## 2.1 Speaker set

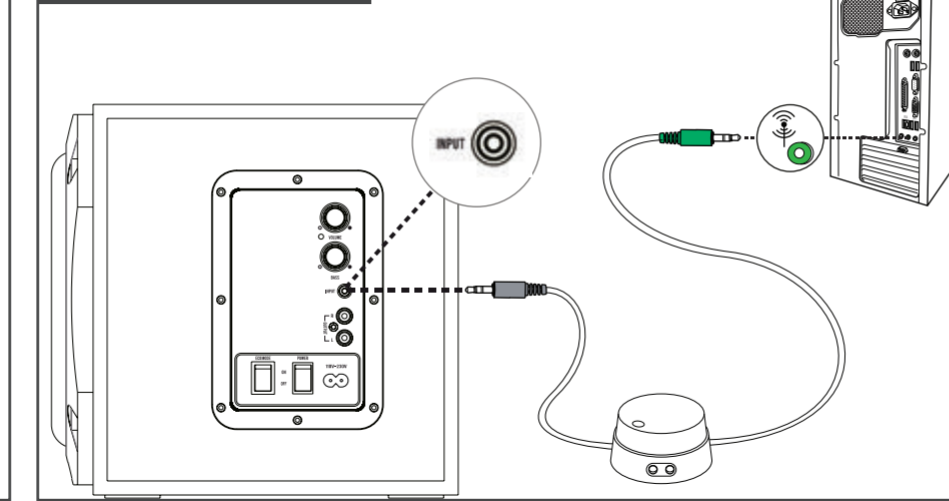


Quick Installation Guide

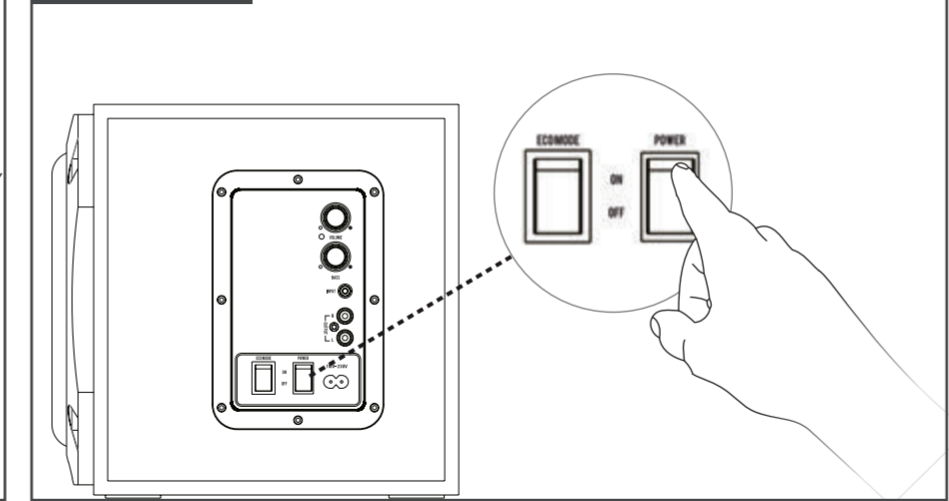
### 1. Setup



### 2. Connecting Audio



### 3. Power On



### 4. Volume Control

