

# D3500

## User's Manual

- Read this manual thoroughly before using the camera.
- To ensure proper use of the camera, be sure to read "For Your Safety" (overleaf).
- After reading this manual, keep it in a readily accessible place for future reference.

No reproduction in any form of this manual, in whole or in part (except for brief quotation in critical articles or reviews), may be made without written authorization from NIKON CORPORATION.

D3500 Model Name: N1718  
**Nikon User Support**  
 Visit the site below to register your camera and keep up-to-date with the latest product information. You will find answers to frequently asked questions (FAQs) and can contact us for technical assistance.  
<http://www.europe-nikon.com/support>

NIKON CORPORATION  
 © 2018 Nikon Corporation



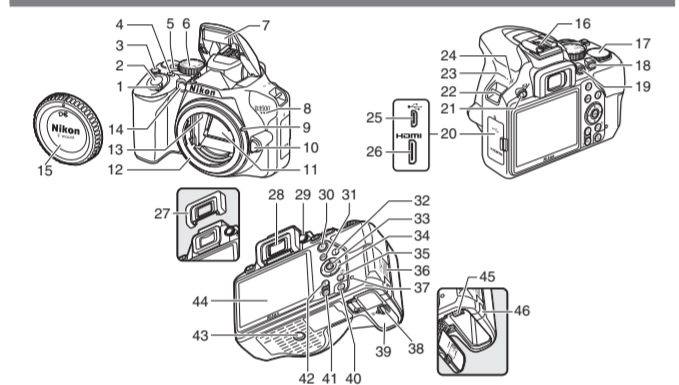
Printed in Thailand  
 GMB44211-01 En

### Package Contents

- D3500 camera
- AN-DC3 strap
- DK-25 rubber eyecup
- User's Manual (this sheet) (comes attached to camera)
- BF-1B body cap
- Warranty (see left)
- EN-EL14a rechargeable Li-ion battery (with terminal cover)
- MH-24 battery charger (plug adapter supplied in countries or regions where required; shape depends on country of sale)

Memory cards are sold separately. Purchasers of lens kits should confirm that the package contains a lens (manuals for the lens may also be provided).

### A The Camera Body



- |  |   |
|--|---|
| 1 Power switch                               | 24 Focal plane mark (→)                               |
| 2 Shutter-release button                     | 25 USB connector                                      |
| 3  button                                    | 26 HDMI connector                                     |
| 4 Movie-record button                        | 27 Rubber eyecup (comes attached to camera)           |
| 5 Live view switch                           | 28 Viewfinder eyepiece                                |
| 6 Mode dial                                  | 29 Diopter adjustment control                         |
| 7 Built-in flash                             | 30  button  |
| 8 Microphone (monaural)                      | 31 MENU button  |
| 9 Mounting mark                              | 32  button  |
| 10 Lens release button                       | 33  button  |
| 11 Mirror                                    | 34 Multi selector                                     |
| 12 Lens mount                                | 35  button  |
| 13 CPU contacts                              | 36 Memory card slot cover                             |
| 14 AF-assist illuminator                     | 37 Memory card access lamp                            |
| Self-timer lamp                              | 38 Battery-chamber cover latch                        |
| Red-eye reduction lamp                       | 39 Battery-chamber cover                              |
| 15 Body cap                                  | 40  button  |
| 16 Accessory shoe (for optional flash units) | 41  button  |
| 17 Command dial                              | 42  button  |
| 18  button                                   | 43 Tripod socket                                      |
| 19  (information) button                     | 44 Monitor  |
| 20 Connector cover                           | 45 Battery latch                                      |
| 21  button                                   | 46 Power connector cover for optional power connector |
| 22 Eyelets for camera strap                  |   |
| 23 Speaker                                   |   |

#### The Multi Selector

In this manual, operations using the multi selector are represented by icons.

- : Press the multi selector up
- : Press the multi selector down
- : Press the multi selector left
- : Press the multi selector right
- button: select highlighted item

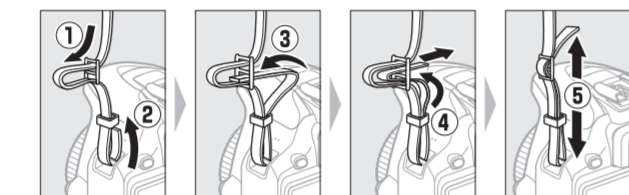
#### GUIDE Mode

When the mode dial is rotated to **GUIDE**, you can shoot, view, retouch, and delete photographs and set up the camera using a convenient on-screen guide. See the online camera manual for more information.

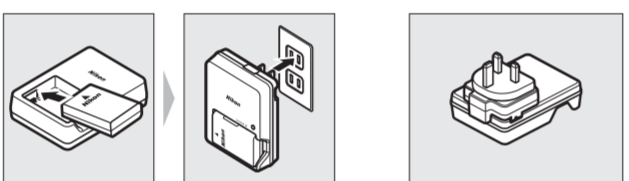
### B Quick Start Guide

#### Attach the Camera Strap

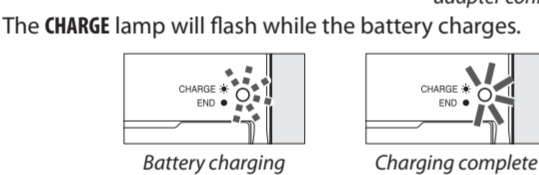
A strap is supplied with the camera; additional straps are available separately. Attach the strap securely to the two camera eyelets.



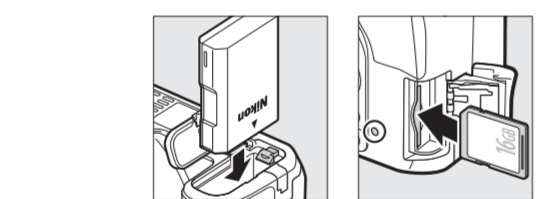
#### Charge the Battery



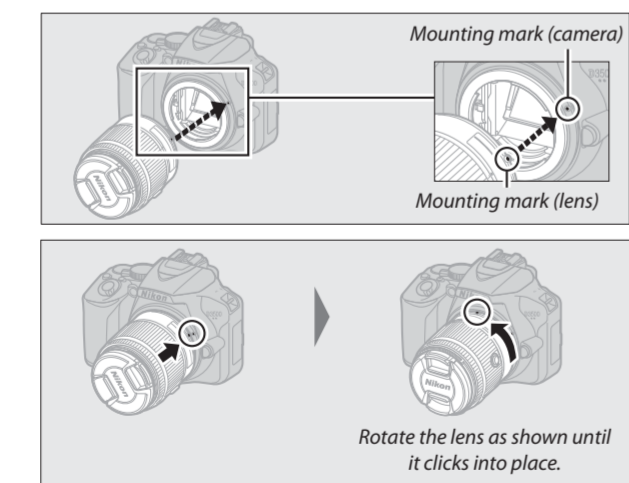
In some countries or regions, charger may be supplied with adapter connected.



#### Insert the Battery and a Memory Card



#### Attach a Lens



### Camera Manuals

The following manuals are available for your Nikon camera:

- **The User's Manual**  
 The *User's Manual* (this manual) describes basic shooting and playback.
- **Online Manuals**  
 More detailed instructions are available on the Nikon website.

- To download manuals in pdf format, visit the Nikon Download Center.  
<http://downloadcenter.nikonimglib.com/en/products/471/D3500.html>
- To view manuals online in html format, visit:  
<http://onlinemanual.nikonimglib.com/d3500/en/>

#### Lenses with Retractable Lens Barrel Buttons

Before using the camera, unlock and extend the lens. Keeping the retractable lens barrel button pressed (1), rotate the zoom ring as shown (2).

Retractable lens barrel button

Pictures cannot be taken when the lens is retracted; if an error message is displayed as a result of the camera having been turned on with the lens retracted, rotate the zoom ring until the message is no longer displayed.

#### Removing Lenses

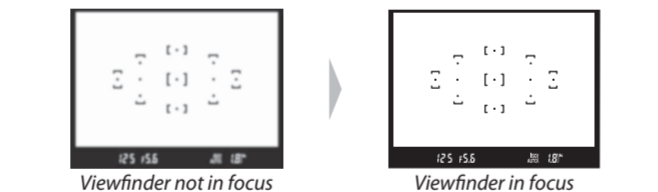
To remove the lens, turn the camera off and press and hold the lens-release button on the front of the camera while rotating the lens in the direction opposite that shown above.

### Camera Setup

- 1 Turn the camera on.  
 A language-selection dialog will be displayed; press and to highlight a language and press to select. The languages available vary with the country or region of sale.
- 2 Set the camera clock.  
 After setting time zone, date format, and daylight saving time options, use the multi selector and button to set the camera clock.

### Focus the Viewfinder

After removing the lens cap, rotate the diopter adjustment control until the focus points are in sharp focus. When operating the control with your eye to the viewfinder, be careful not to put your fingers or fingernails in your eye.



### "Point-and-Shoot" Modes (AUTO and )

- 1 Rotate the mode dial to **AUTO** or .
- 2 Frame the photograph.

- 3 Press the shutter-release button halfway to focus.
- 4 Smoothly press the shutter-release button the rest of the way down to take the photograph.

### D Recording Movies

- 1 Rotate the live view switch.  
 The view through the lens will be displayed in the monitor.
- 2 Press the shutter-release button halfway to focus.
- 3 Press the movie-record button to start recording.

Live view switch

Movie-record button

Time remaining

A recording indicator and the time available are displayed in the monitor.

Recording indicator

- 4 Press the movie-record button again to end recording.
- 5 Rotate the live view switch to exit live view.

### E Viewing Photographs

Pressing displays a picture in the monitor.

Movies are indicated by a icon. Press to start playback.

Info button

### F Deleting Unwanted Photographs

Note that photographs cannot be recovered once deleted.

- Press the button. A confirmation dialog will be displayed; press the button again to delete the image and return to playback.
- To exit without deleting the picture, press .

Info button

### G Camera Menus

Most shooting, playback, and setup options can be accessed from the camera menus. To view the menus, press the MENU button.

#### Tabs

Choose from the following menus:

- Playback
- Shooting
- Setup
- Retouch
- Recent Settings

Slider shows position in current menu.

Current settings are shown by icons.

Menu options  
 Options in current menu.

#### Help icon

If the help icon is displayed, you can press the (?) button to view help for the currently selected item.

### H Connecting to Smart Devices with SnapBridge

Install the SnapBridge app to your smart device to download pictures from the camera or control the camera remotely. For more information, see the online camera manual.



#### Readying the Smart Device

Before connecting, ready your smart device by installing the SnapBridge app and enabling Bluetooth.

- 1 Search for "snapbridge" on the Apple App Store® (iOS) or Google Play™ (Android™) and install the SnapBridge app.

Information on supported operating systems is available from the download site. This camera is not compatible with the SnapBridge 360/170 app.

- 2 Enable Bluetooth on the smart device. Note that the actual connection to the camera will be made using the SnapBridge app; do not attempt to connect using the Settings app on your device.

#### Pairing and Connecting

Before pairing, confirm that there is space available on the camera memory card. To prevent unexpected interruptions, you should also check that the camera battery is fully charged.

- 1 Highlight **Connect to smart device** in the setup menu and press .
- 2 Follow the instructions displayed on the camera and in the SnapBridge app, to complete setup.

See SnapBridge online help for detailed setup information (additional information is also available in the online camera manual). For information on SnapBridge online help, visit:  
<https://nikonimglib.com/snbr/onlinehelp/en/index.html>

### Caring for the Camera

#### Storage

When the camera will not be used for an extended period, turn the camera off and remove the battery. Do not store in locations that:

- are poorly ventilated or subject to humidities of over 60%
- are next to equipment that produces strong electromagnetic fields, such as televisions or radios
- are exposed to temperatures above 50 °C (122 °F) or below -10 °C (14 °F)

#### Cleaning

##### Camera Body

Use a blower to remove dust and lint, then wipe gently with a soft, dry cloth. After using the camera at the beach or seaside, wipe off sand or salt with a cloth lightly dampened in distilled water and dry thoroughly. Important: Dust or other foreign matter inside the camera may cause damage not covered under warranty.

##### Lens, Mirror, and Viewfinder

These glass elements are easily damaged. Remove dust and lint with a blower. If using an aerosol blower, keep the can vertical to prevent the discharge of liquid. To remove fingerprints and other stains, apply a small amount of lens cleaner to a soft cloth and clean with care.

##### Monitor

Remove dust and lint with a blower. When removing fingerprints and other stains, wipe the surface lightly with a soft cloth or chamois leather. Do not apply pressure, as this could result in damage or malfunction.

\* Do not use alcohol, thinner, or other volatile chemicals.

### Troubleshooting

#### Battery/Display

**The camera is on but does not respond:** Wait for recording to end. If the problem persists, turn the camera off. If the camera does not turn off, remove and reinsert the battery.

**Viewfinder is out of focus:** Focus the viewfinder using the diopter adjustment control.

#### Shooting (All Modes)

**Shutter-release disabled:**

- Memory card is locked, full, or not inserted.
- Camera is not in focus.

**Photos are out of focus:** The camera may be unable to focus on subjects that are low in contrast, dominated by regular geometric patterns, or dwarfed by objects in the background, or that include objects at different distances from the camera, areas of sharply contrasting brightness, or many fine details.

#### Playback

**Cannot view pictures recorded with other cameras:** Pictures recorded with other makes of camera may not be display correctly.

**Some pictures are not displayed during playback:** Select **All** for **Playback** folder.

**Cannot delete picture:** Memory card is locked.

Specifications	
■ <b>Nikon D3500 Digital Camera</b>	
Type	Single-lens reflex digital camera
Lens mount	Nikon F mount (with AF contacts)
Effective angle of view	Nikon DX format; focal length equivalent to approx. 1.5x that of lenses with FX format angle of view
Effective pixels	
Effective pixels	24.2 million
Image sensor	
Image sensor	23.5 × 15.6 mm CMOS sensor
Total pixels	24.78 million
Dust-reduction System	Image Dust Off reference data (Capture NX-D software required)
Storage	
Image size (pixels)	• 6000 × 4000 (Large; 24.0 M) • 4496 × 3000 (Medium; 13.5 M) • 2992 × 2000 (Small; 6.0 M)
File format	• <b>NEF (RAW):</b> 12 bit, compressed • <b>JPEG:</b> JPEG-Baseline compliant with fine (approx. 1 : 4), normal (approx. 1 : 8), or basic (approx. 1 : 16) compression • <b>NEF (RAW)+JPEG:</b> Single photograph recorded in both NEF (RAW) and JPEG formats
Picture Control System	Standard, Neutral, Vivid, Monochrome, Portrait, Landscape, Flat; selected Picture Control can be modified
Media	SD (Secure Digital) and UHS-I compliant SDHC and SDXC memory cards
File system	DCF 2.0, Exif 2.3, PictBridge
Viewfinder	
Viewfinder	Eye-level pentamirror single-lens reflex viewfinder
Frame coverage	Approx. 95% horizontal and 95% vertical
Magnification	Approx. 0.85x (50 mm f/1.4 lens at infinity, -1.0 m <sup>-1</sup> )
Eye point	18 mm (-1.0 m <sup>-1</sup> ; from center surface of viewfinder eyepiece lens)
Diopter adjustment	-1.7—+0.5 m <sup>-1</sup>
Focusing screen	Type B BriteView Clear Matte Mark VII screen
Reflex mirror	Quick return
Lens aperture	Instant return, electronically controlled
Lens	
Autofocus support	Autofocus is available with AF-P and type E and G AF-S lenses.
Shutter	
Type	Electronically-controlled vertical-travel focal-plane shutter
Speed	1/4000—30 s in steps of 1/3 EV; Bulb; Time
Flash sync speed	X = 1/200 s; synchronizes with shutter at 1/200 s or slower
Release	
Release mode	(single frame),  (continuous),  (quiet shutter release),  (self-timer)
Frame advance rate	Up to 5 fps Note: Frame rates assume manual focus, manual or shutter-priority auto exposure, a shutter speed of 1/250 s or faster, and other settings at default values.
Self-timer	2 s, 5 s, 10 s, 20 s; 1–9 exposures
Exposure	
Metering mode	TTL exposure metering using 420-pixel RGB sensor
Metering method	• <b>Matrix metering:</b> 3D color matrix metering II • <b>Center-weighted metering:</b> Weight of 75% given to 8-mm circle in center of frame • <b>Spot metering:</b> Meters 3.5-mm circle (about 2.5% of frame) centered on selected focus point
Range (ISO 100, f/1.4 lens, 20 °C/68 °F)	• <b>Matrix or center-weighted metering:</b> 0–20 EV • <b>Spot metering:</b> 2–20 EV
Exposure meter coupling	CPU
Mode	Auto modes ( auto;  auto, flash off); programmed auto with flexible program ( P); shutter-priority auto ( S); aperture-priority auto ( A); manual ( M); scene modes ( portrait;  sports;  close up;  night portrait); special effects modes ( night vision;  VI super vivid;  POP;  photo illustration;  toy camera effect;  miniature effect;  selective color;  silhouette;  high key;  low key)
Exposure compensation	Can be adjusted by -5—+5 EV in increments of 1/3 EV in P, S, A, M, scene, and  modes
Exposure lock	Luminosity locked at detected value with  (O-N) button
ISO sensitivity (Recommended Exposure Index)	ISO 100–25600 in steps of 1 EV. Auto ISO sensitivity control available
Active D-Lighting	On, off

