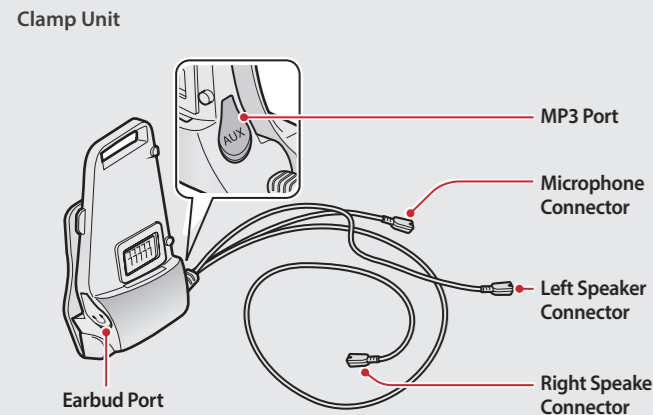
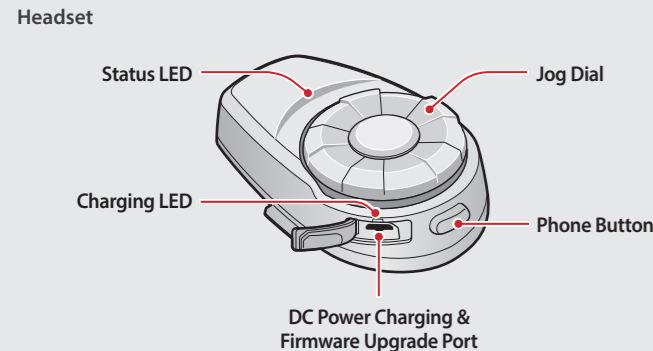
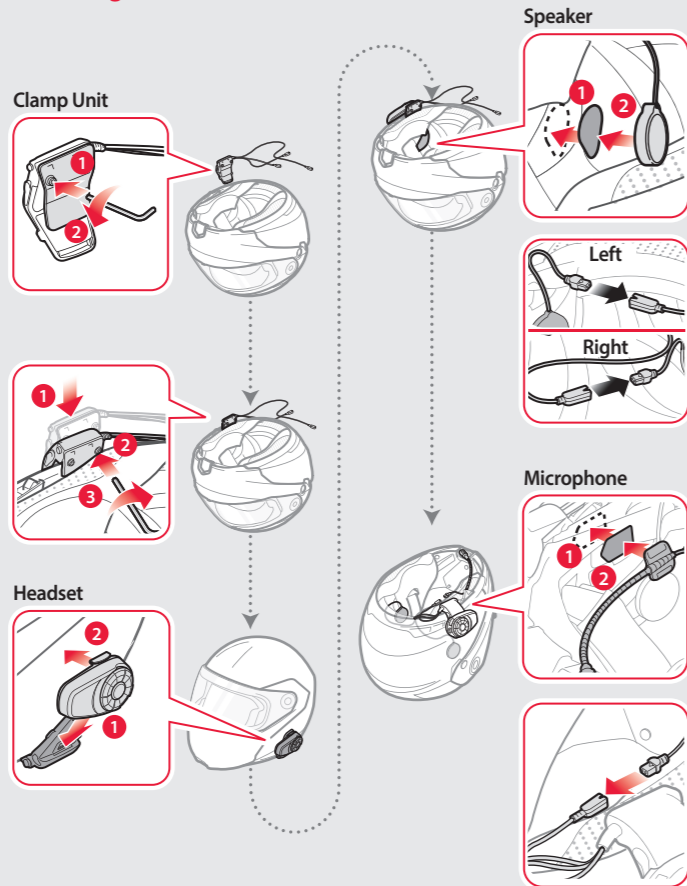


PREPARATION

Knowing the Headset Layout

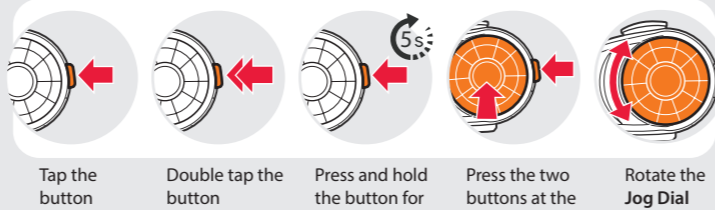


Installing the Headset

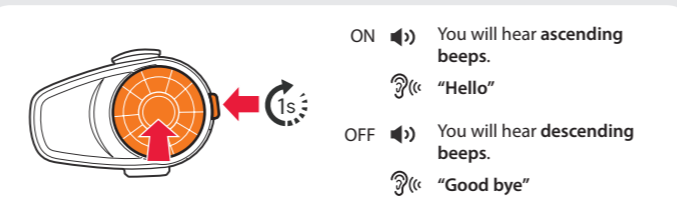


BASIC OPERATION

Operating the Buttons

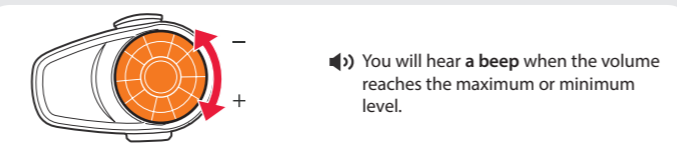


Turning On/Off the Headset

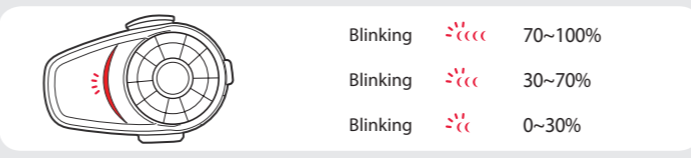


Simultaneously press and hold the Jog Dial and the Phone Button for 1 second to turn on or off the headset.

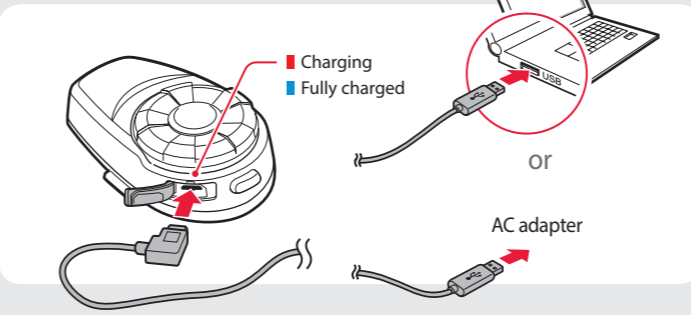
Adjusting the Volume



Checking the Battery Level

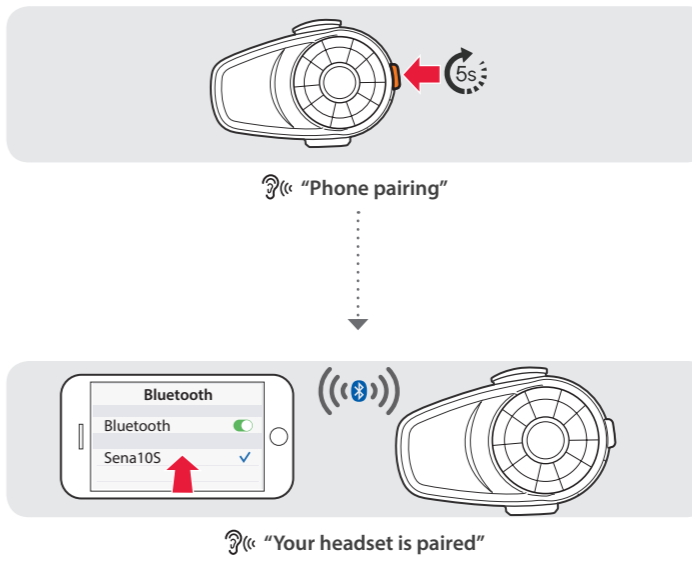


Charging the Battery

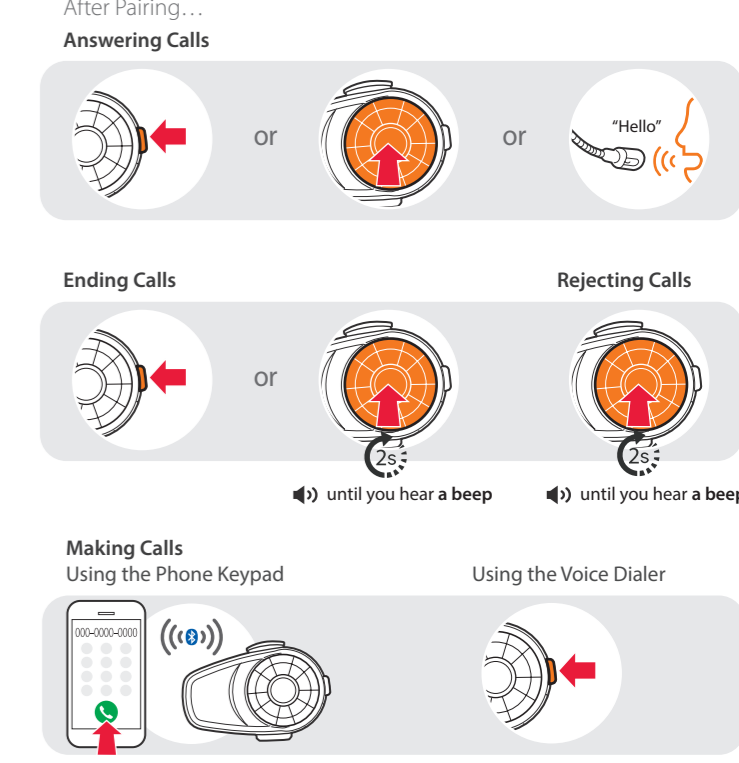


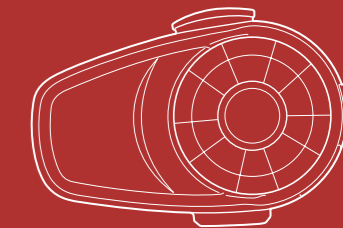
PAIRING

Pairing with Mobile Devices - Phone, Music



Using Phone Features





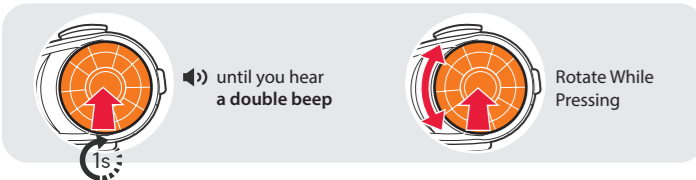
Using the Speed Dial



- ▶ You will hear a beep.
🔊 "Speed dial"
- Voice Menu
- Last number redial
 - Speed dial 1
 - Speed dial 2
 - Speed dial 3
 - Cancel

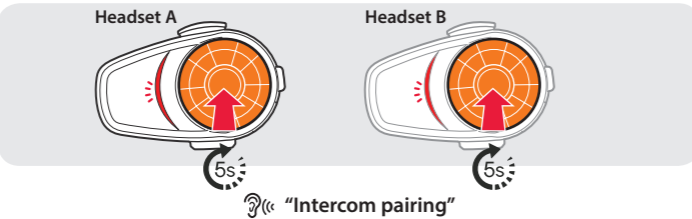
Listening to Music

- After Pairing...
- ▶ Playing or Pausing Music
- ▶ Tracking Forward or Backward



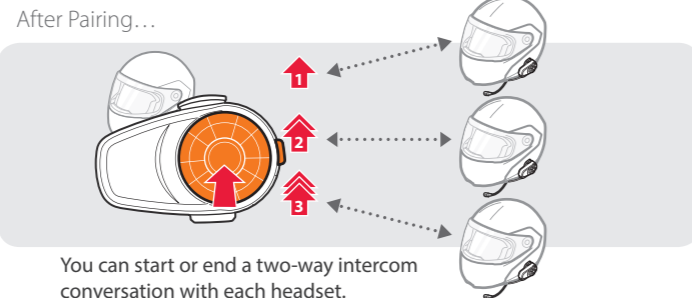
INTERCOM

Pairing with Other Headsets



Follow the steps above to pair with two or more headsets.

Using the Intercom



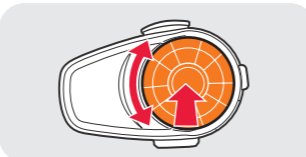
You can start or end a two-way intercom conversation with each headset.

RADIO

Turning On/Off the FM Radio

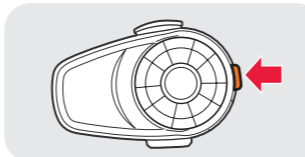


Seeking Stations

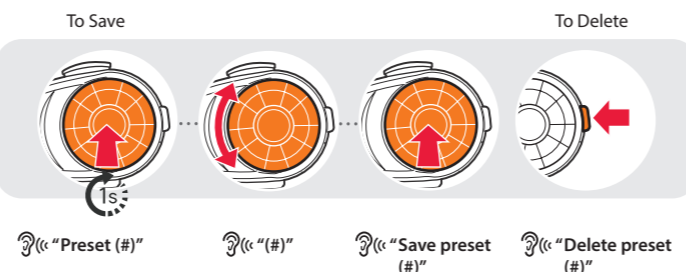


Rotate While Pressing

Listening to Preset Stations



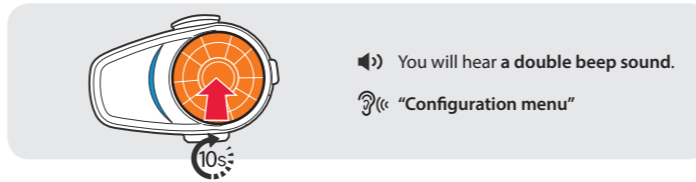
Saving or Deleting Stations



- 🔊 "Preset (#)"
- 🔊 "(#)"
- 🔊 "Save preset (#)"
- 🔊 "Delete preset (#)"

SETTING

Method1) Using the headset



Method2) Using the Sena Device Manager

Connect the headset to your computer via a USB cable. Launch the Sena Device Manager and click DEVICE SETTING to configure the headset settings.

For details about downloading the Sena Device Manager, refer to the leaflet included in the package.

Method3) Using the Sena Smartphone App

1. On your smartphone, download the Sena Smartphone App for Android or iPhone from Google Play or App Store. Refer to www.sena.com/headset-app/ for more details.
2. Pair your smartphone with the headset.
3. Run the Sena Smartphone App. Swipe the screen to the right and tap Setting to configure the headset settings.

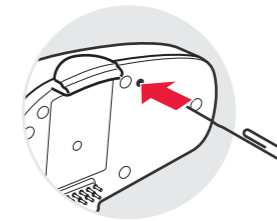
TROUBLESHOOTING

Factory Reset

If you want to restore the 10S to factory default settings, press and hold the Phone Button for 10 seconds. Tap the Jog Dial. The headset automatically restores the default settings and turns off.

Fault Reset

If the 10S is not working properly for any reason, push the pin-hole reset button located on the back of the headset.



SENA
f y i

Sena Technologies, Inc.
www.sena.com
Customer Support: support.sena.com
E-mail: support@sena.com