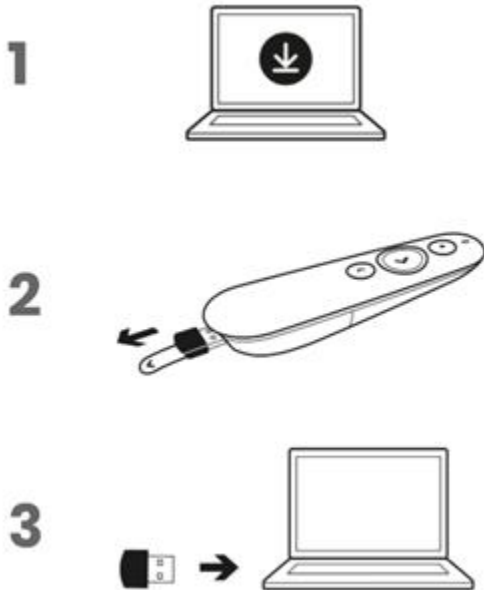


GETTING STARTED

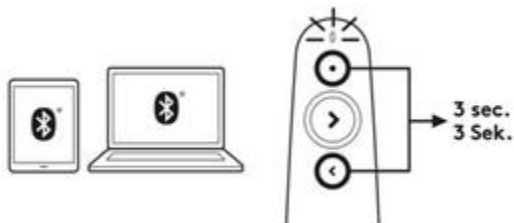
We've put everything you need to get started with your R500 Laser Presentation Remote right here.

- 1** [Download](#) and install the Logitech Presentation Software.
- 2** Remove the pull-tab and USB receiver.
- 3** Plug the USB receiver into a USB port or connect via [Bluetooth](#).

CONNECT WITH THE USB RECEIVER



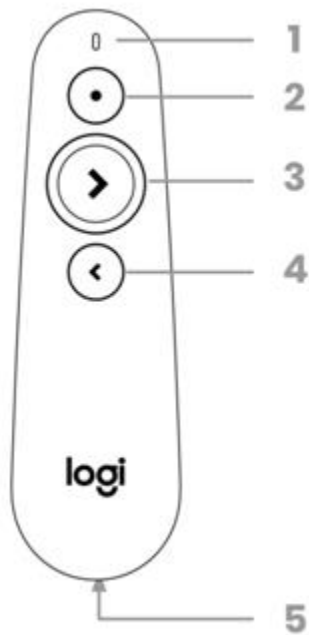
CONNECT USING BLUETOOTH



Press and hold the top and bottom buttons at the same time for 3 seconds. The LED starts blinking rapidly and then be available for Bluetooth pairing for three minutes.

Complete the [Bluetooth](#) pairing on your computer, tablet or phone.

Product Overview



1 – LED INDICATOR

Instant feedback on battery and connectivity status.

2 – LASER POINTER

Press and hold to activate the laser.

3 – NEXT

- Simple press to navigate forward
- Press and hold to start presentation*

4 – BACK

- Simple press to navigate backward
- Press and hold to show a blank screen*

5 – RECEIVER STORAGE

The USB dongle receiver can be stored in the remote.

* Requires Logitech Presentation Software installation.

BATTERY AND POWER MANAGEMENT

BATTERY LIFE

The R500 runs for 12 months on a single AAA battery. When your battery is low, the R500 goes into a 'power-saving' mode – disabling the laser to extend battery life so you can continue presenting for an extra week.

NOTE: Battery life may vary on user and computing conditions.

CHECK YOUR BATTERY STATUS:

Press and hold the laser button:

- If the LED is steady white, then the battery is good.
- If the LED is pulsing red, the battery is low and the laser is disabled to save power

LED STATUS INDICATOR

LED BEHAVIOR	INDICATION
Steady white	Battery is good
Blinking rapidly white	Device is attempting to pair using Bluetooth
Pulsing red	Low battery, laser is disabled to save power

SMART POWER MANAGEMENT

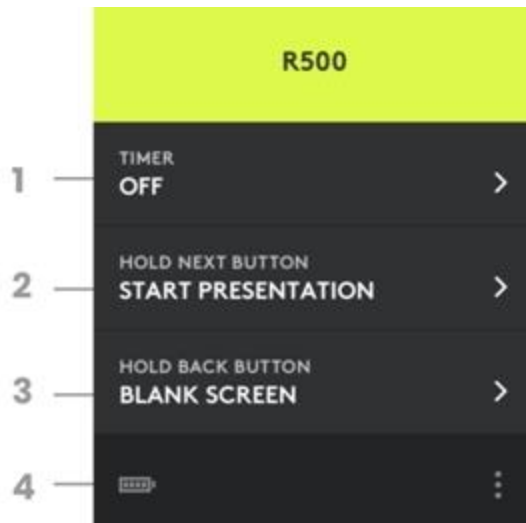
The R500 automatically goes into deep sleep after 30 minutes of inactivity.

To prevent draining the battery when not used or when traveling, the R500 will instantly go to deep sleep if not connected to a computer. The laser will also be automatically stopped after a continuous press of 2 minutes.

LOGITECH PRESENTATION SOFTWARE OVERVIEW

Logitech Presentation Software allows you to start the presentation, show a blank screen, customize button functions, monitor battery life, and set on-screen timers.

The software works on Windows and Mac and can be downloaded [here](#).



1 — TIMER

Shows a clock or countdown timer on your presenter screen. Allows to set visual alerts at different times during your presentation

NOTE: The timer window is only seen when using a second screen as an 'Extended display'.

2 — HOLD NEXT BUTTON

Start your presentation (can be customized).

3 — HOLD BACK BUTTON

Show a blank screen (can be customized).

4 — BATTERY STATUS

The icon shows the battery level.