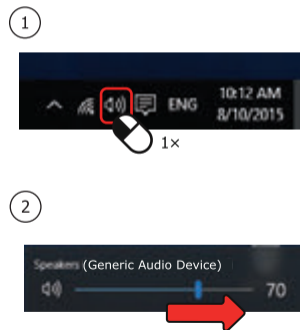


## 5. Installation - Windows 10/8/7

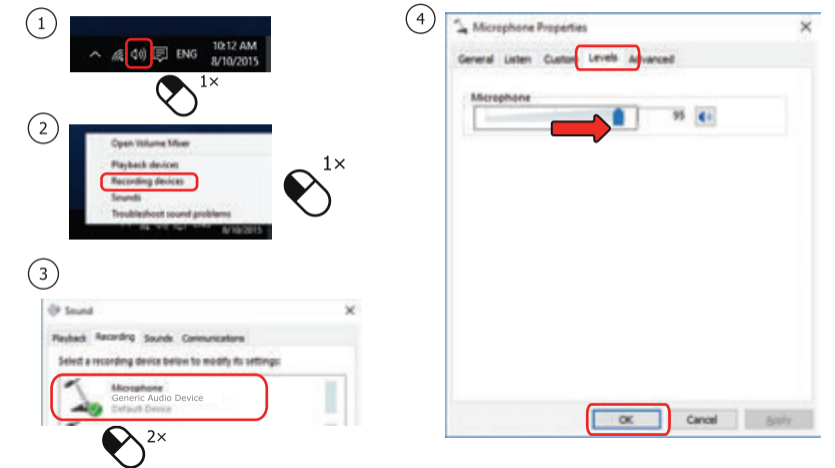
### Windows 8



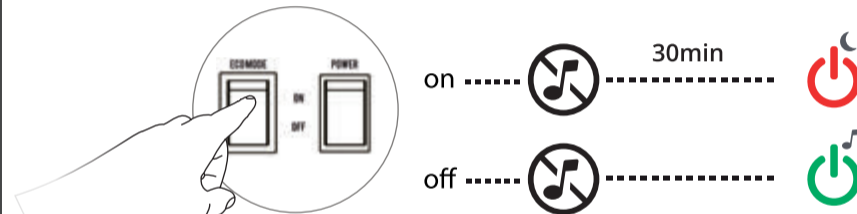
### Windows 10/7



## 6. Installation - Windows 10/8/7



## 5. ECO Mode



Frequently asked questions [www.trust.com/22197/faq](http://www.trust.com/22197/faq)

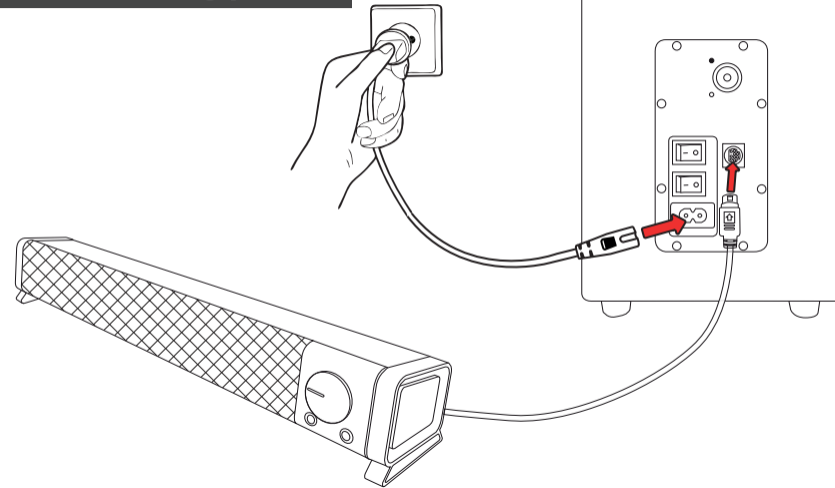


# SOUNDBAR

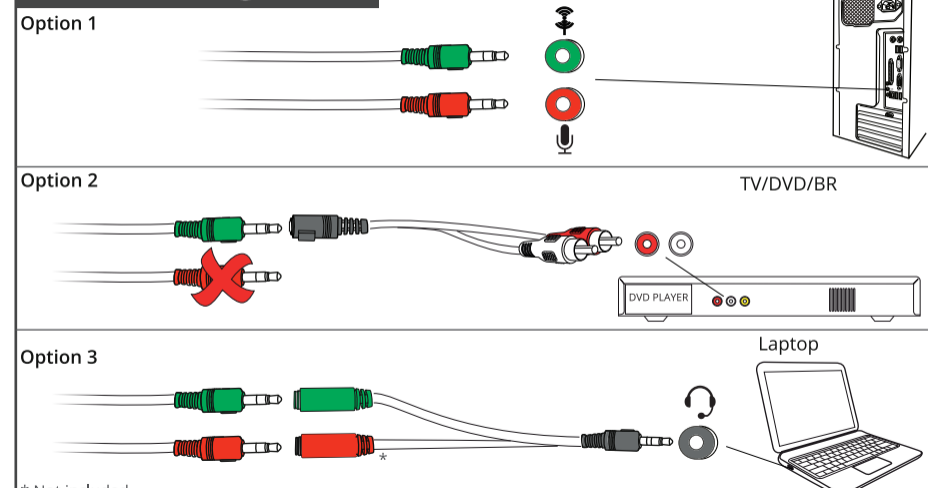
ASTO 2.1

Quick Installation Guide

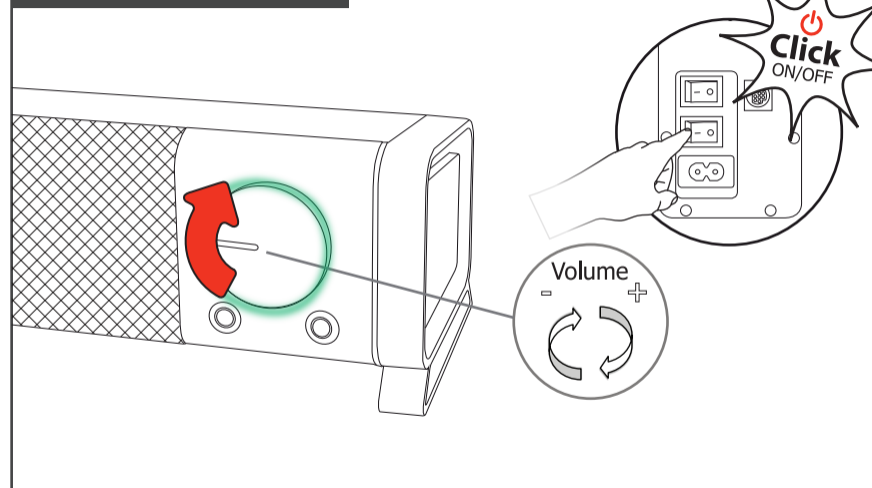
## 1. Connecting power



## 2. Connecting audio



## 3. Volume control



## 4. Other connections

